

North Conway New Hampshire



# Golden Gables Inn

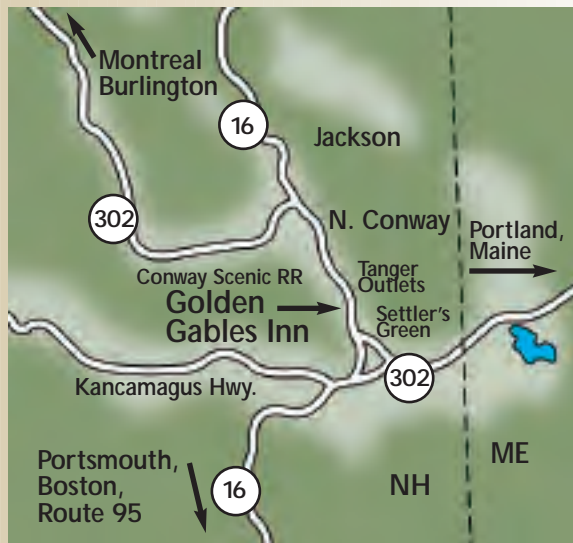
North Conway New Hampshire



# Golden Gables Inn

- ▲ Rooms Feature Mountain View Porches or Ground Floor Patios
- ▲ Convenient Parking
- ▲ 3.5 Acre Back Yard
- ▲ Walking Distance to the Best Factory Outlets and Great Restaurants
- ▲ Near All Major Summer and Winter Attractions
- ▲ The Perfect In-Town Valley Location

1814 White Mountain Hwy., Rt. 16 & 302  
 P.O. Box 626 North Conway, NH 03860  
 Reservations: 1-866-889-7282  
 Telephone: 603-356-2878  
 www.goldengablesinn.com  
 Your Host, the Filip Family



We are easy to find from all areas. Just follow Route 16 from the south or 302 from the east. We are located on Route 16 & 302 in the heart of North Conway.

Photo Credits: N. Conway Scenic RR: Les MacDonald, NHDOTT  
 Storyland: Courtesy of Storyland  
 Skier, Foliage: MWV Chamber of Commerce

Brochure by Tourist Marketing Services • www.touristmarketing.com

## Beautiful Mountain Views In A Perfectly Convenient Location



**1-888-GABLEINN**  
**(1-888-422-5346)**



[www.goldengablesinn.com](http://www.goldengablesinn.com)

The Golden Gables Inn is a unique combination of views, convenience and relaxation.

Enjoy all the amenities of a national chain with the personal touch and value of a family owned



resort. Offering 58 well appointed units, Golden Gables Inn has something to satisfy all the needs of today's traveler. In addition to the beauty of the property itself, we offer

a remarkable amount of leisure space for our

guests. Step out onto your porch and experience the kind of quietness and



space you would not expect from such a convenient in-town location. Enjoy our spacious grounds for games, picnicking, and privacy. In

summer our large heated pool and Jacuzzi provide a great way to relax



and rejuvenate your spirit from a busy day discovering all that the Mt. Washington Valley has to offer.



2 Blocks

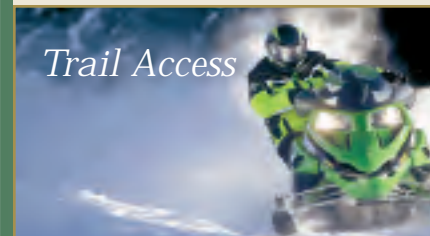


The Golden Gables Inn is situated in the heart of Mount Washington Valley. Located in the center of the "strip", the Inn is within a half mile to over one hundred tax-free factory outlet stores

and local restaurants. One mile north is North Conway Village, home of the Conway Scenic Railroad and Schouler Park.

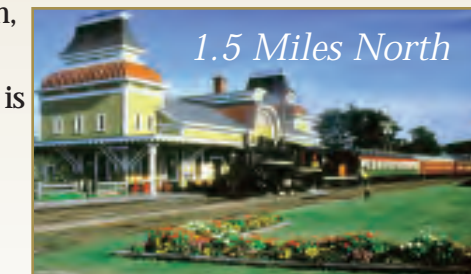


A short car ride will bring you to the base of Mt. Washington, the Saco River, and many other 4 season attractions.



Storyland is 7 miles north.

Skiing at Attitash, Cranmore and Black Mountain is within ten miles. Four scenic golf courses are less than a thirty



1.5 Miles North

minute drive. You will find that the entire White Mountain region is easily accessible from here. Take a scenic drive across the Kancamagus Highway, or explore Mount Washington, by rail, car or on foot. Both the wonders of nature and family attractions of this area will keep you pleasantly occupied for days or weeks. The Mount Washington Valley is the heart of the White Mountain region.



7 Miles North

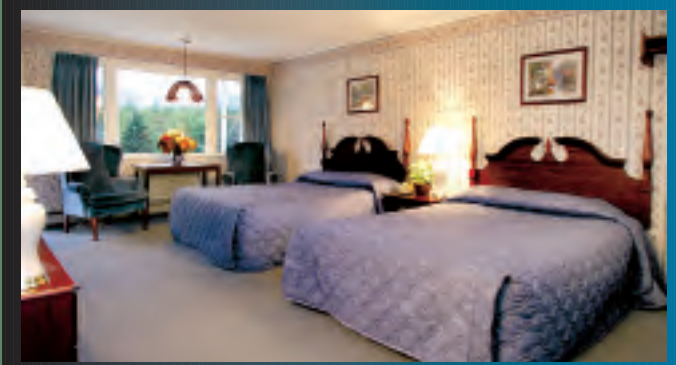
Our rooms are well appointed and modern. They offer a variety of amenities depending on your needs. Choose from one king bed, two queen beds, king suites or the ultimate in relaxation, king bed with in-room Jacuzzi and fireplace. Whatever your choice, all rooms include color cable tv, telephone, a/c, hair dryer, mini refrigerator and complimentary wireless internet.



*2 Queen Beds Deluxe: Opened in 2005, these rooms are part of our newest accommodations. Rooms have a modern layout and furnishings. They provide a much larger bathroom for convenience and offer better closet space. Additional offerings: microwave, iron & board.*



*King Deluxe: These rooms are primarily located on the second floor with mountain facing porch or private balcony. Rooms are also much larger in size than the king standard. Additional offerings: microwave, iron & board.*



*2 Queen Beds Standard: These rooms are more spacious than our double bed rooms. The room location provides a front door for easy parking and also offers a back door and picture window with mountain facing patio or second floor balcony. Additional offerings: microwave*



*King Suites: These rooms were also newly added in 2005.*



*The suite provides a living room with one queen sleep sofa and separate bedroom with one king bed. There are also two TV's and two A/C units. Additional offerings: microwave, DVD player, bar sink, iron & board.*

*King Jacuzzi & Fireplace Suite: For the ultimate in relaxation, these rooms feature a 2 person in-room corner Jacuzzi Tub and Gas Fireplace. Rooms are located on the second floor away from the highway, with glass sliders and walk-out private balconies.*



*Additional offerings: microwave, DVD player, CD radio, iron & board*

*King Standard: These rooms were completely renovated in 2006 with such features as 27" flat screen televisions and whisper quiet remote a/c units. The location provides immediate car access while at the same offering a private deck with mountain view.*



*Whichever Type Of Lodging You Choose, the Golden Gables Inn provides you with superior hospitality in a perfectly convenient location.*



*A New Photo Will Appear On Our Website When Renovations Are Complete*

*2 Double Standard: These rooms are smaller in size than our two queen style rooms. Newly remodeled in 2007, these rooms provide a basic, clean accommodation at a reasonable price. They are located on the ground floor facing the back yard.*